

# LIQUID COLOURS FOR POLYCARBONATE

Multiwall and compact polycarbonate sheets can be coloured through the liquid technology by adding a limited amount of colour directly into the extruder in order to obtain uniform colouration, excellent dispersion and surface protection.



**OPAL**  
10088 - LDR 0,3%



**OPAL SNOW**  
18592 - LDR 0,2%



**YELLOW TR**  
222150 - LDR 0,1%



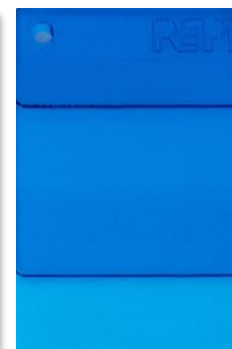
**ORANGE TR**  
33321 - LDR 0,1%



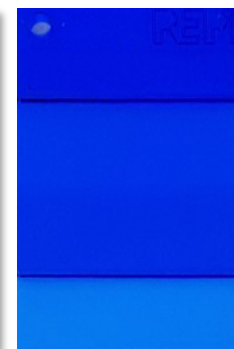
**RED TR**  
40169 - LDR 0,14%



**RED TR**  
40045 - LDR 0,15%



**TURQUOISE**  
60119 - LDR 0,1%



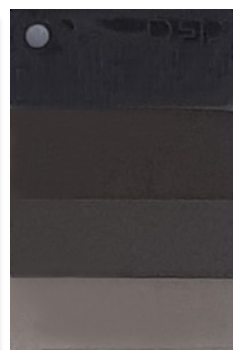
**BLUE TR**  
60118 - LDR 0,05%



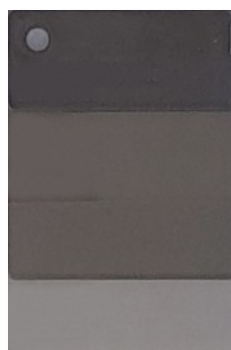
**SILVER**  
90413 - LDR 0,3%



**BRONZE TR**  
99959 - LDR 0,1%



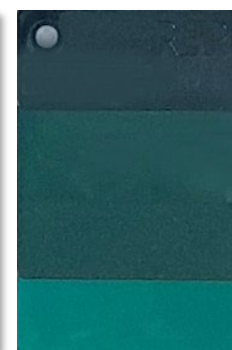
**BRONZE TR**  
90209 - LDR 0,1%



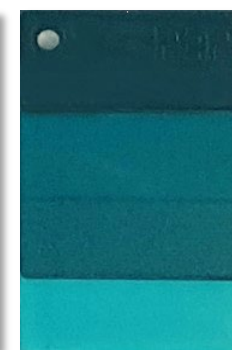
**BRONZE TR**  
99646 - LDR 0,1%



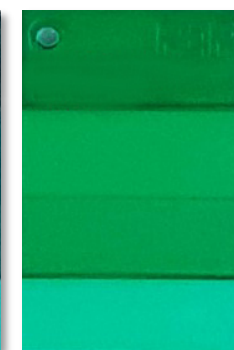
**AMBER TR**  
80535 - LDR 0,075



**GREEN TR**  
70529 - LDR 0,11%



**GREEN TR**  
70135 - LDR 0,1%



**GREEN TR**  
77402 - LDR 0,2%

Online colour calibration - Due to individual computer monitor limitations, on-screen colours may not accurately reflect real colour shade.

Before placing any orders, please check with REPI experts.

Copyright REPI - All rights reserved



WE ARE #COLOUREXPLORES  
repi.com



**REPI GROUP – FERLINE SA**  
Via Lucchini 2  
CH-6900 Lugano - SWITZERLAND  
ferline@repi.com

**REPI S.r.l.**  
Via B. Franklin 2  
21050 Lonate Ceppino VA - ITALY  
repi.italia@repi.com

**REPI LLC**  
2825 REPI Court  
Dallas, NC 28034 - USA  
repi.usa@repi.com

**OOO "REPI"**  
St. Aleksey Dikogo 18B,  
office 307  
111396 Moscow - RUSSIA  
repi.russia@repi.com

**REPI (UK) LIMITED**  
36 Dunes Way,  
Wellington Employment Park  
Liverpool L5 9RJ - UK  
repi.uk@repi.com

**REPI THAI CO, LTD**  
347/50-51 Moo9,  
Nai Khlong Bang Pla Kod Sub-District  
Phra Samut Chedi District,  
Samut Prakan Province, 10290  
THAILAND  
repi.thailand@repi.com