

LIQUID COLOURS FOR PET EXTRUSION

PET and r-PET extruded sheets can be coloured through the liquid technology by adding a limited amount of colour directly into the extruder to obtain uniform colouration, excellent dispersion and surface protection.



OPAL
10088 - LDR 0,3%



OPAL SNOW
18592 - LDR 0,2%



YELLOW TR
222150 - LDR 0,1%



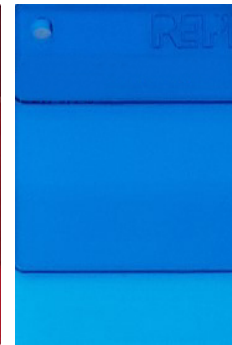
ORANGE TR
33321 - LDR 0,1%



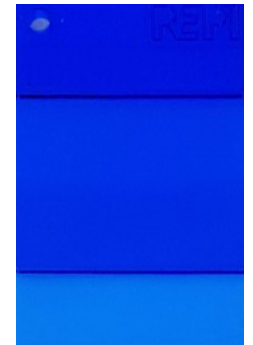
RED TR
40169 - LDR 0,14%



RED TR
40045 - LDR 0,15%



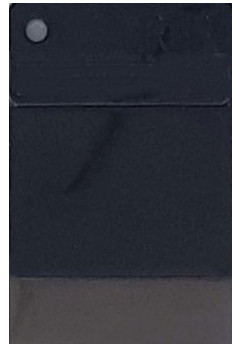
TURQUOISE
60119 - LDR 0,1%



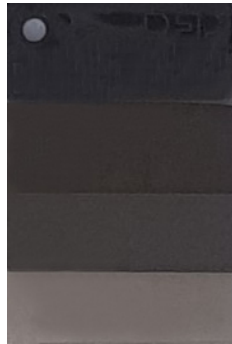
BLUE TR
60118 - LDR 0,05%



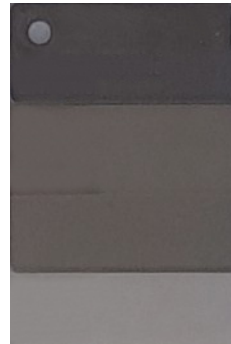
SILVER
90413 - LDR 0,3%



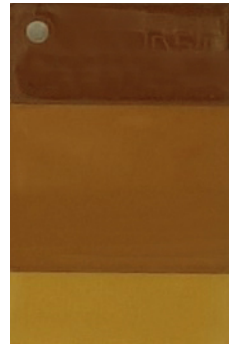
BRONZE TR
99959 - LDR 0,1%



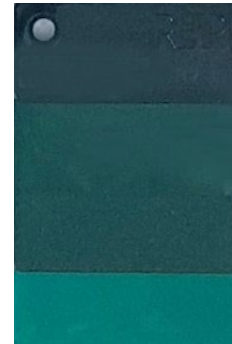
BRONZE TR
90209 - LDR 0,1%



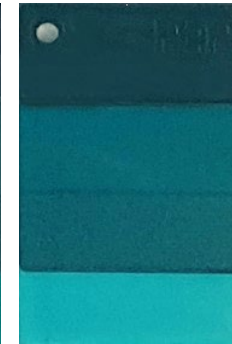
BRONZE TR
99646 - LDR 0,1%



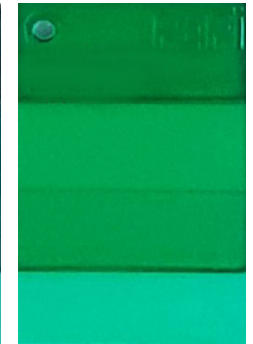
AMBER TR
80535 - LDR 0,075



GREEN TR
70529 - LDR 0,11%



GREEN TR
70135 - LDR 0,1%



GREEN TR
77402 - LDR 0,2%

Online colour calibration: due to individual computer monitor limitations, on-screen colours may not accurately reflect real colour shade.

Before placing any orders, please check with REPI experts.

Copyright REPI - All rights reserved



WE ARE #COLOUREXPLORES
repi.com



REPI GROUP – FERLINE SA
Via Lucchini 2
CH-6900 Lugano - SWITZERLAND
ferline@repi.com

REPI S.r.l.
Via B. Franklin 2
21050 Lonate Ceppino VA - ITALY
repi.italia@repi.com

REPI LLC
2825 REPI Court
Dallas, NC 28034 - USA
repi.usa@repi.com

OOO "REPI"
St. Aleksey Dikogo 18B,
office 307
111396 Moscow - RUSSIA
repi.russia@repi.com

REPI (UK) LIMITED
36 Dunes Way,
Wellington Employment Park
Liverpool L5 9RJ - UK
repi.uk@repi.com

REPI THAI CO, LTD
347/50-51 Moo9,
Nai Khlong Bang Pla Kod Sub-District
Phra Samut Chedi District,
Samut Prakan Province, 10290
THAILAND
repi.thailand@repi.com