



BASIC COLOURS FOR PVC

This is a selection of liquid basic colours offered by REPI for the colouration of rigid and plasticised PVC used in injection, extrusion, calendaring and coating processes.
REPI basic colours can be used as such or can be mixed to obtain multiple shades according to formulations provided by REPI.



WHITE REPIPLAST/U
11136 - LDR 1%



YELLOW REPIPLAST/U
20343 - LDR 1%



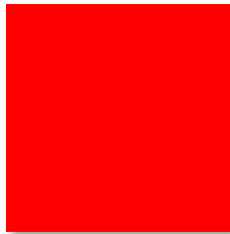
YELLOW REPIPLAST/U
222138 - LDR 1%



YELLOW REPIPLAST/U
222143 - LDR 1%



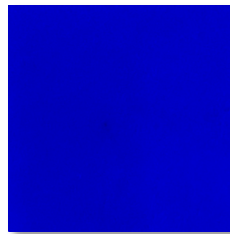
GREEN REPIPLAST/U
77736 - LDR 1%



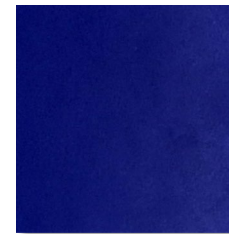
RED REPIPLAST/U
444139 - LDR 1%



RED REPIPLAST/U
444143 - LDR 1%



BLUE REPIPLAST/U
66684 - LDR 1%



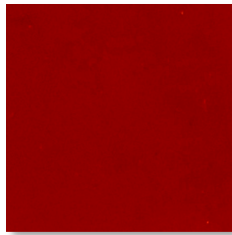
BLUE REPIPLAST/U
66679 - LDR 1%



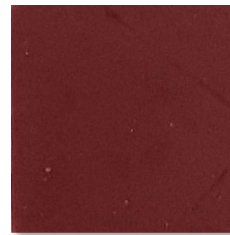
BLUE REPIPLAST/U
66608 - LDR 1%



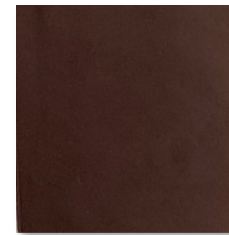
BROWN REPIPLAST/U
88806 - LDR 1%



BROWN REPIPLAST/U
88837 - LDR 1%



BROWN REPIPLAST/U
88819 - LDR 1%



BROWN REPIPLAST/U
88838 - LDR 1%



BLACK REPIPLAST/U
90818 - LDR 1%

Online colour calibration: due to individual computer monitor limitations, on-screen colours may not accurately reflect real colour shade.

Before placing any orders, please check with REPI experts.

Copyright REPI - All rights reserved

THANK YOU



REPI GROUP – FERLINE SA
CH-6900 Lugano – SWITZERLAND
ferline@repi.com

REPI LLC
Dallas, NC 28034 – USA
repi.usa@repi.com

REPI (UK) LIMITED
Liverpool L5 9RJ – UK
repi.uk@repi.com

REPI S.r.l.
21050 Lonate Ceppino – ITALY
repi.italia@repi.com

REPI GmbH
21217 Seevetal – GERMANY
repi.germany@repi.com

000 “REPI”
111396 Moscow – RUSSIA
repi.russia@repi.com

REPI THAI CO. LTD
Samut Prakan Province, 10290 – THAILAND
repi.thailand@repi.com

REPI ASIA Pte. Ltd.
049145 – SINGAPORE
repi.singapore@repi.com