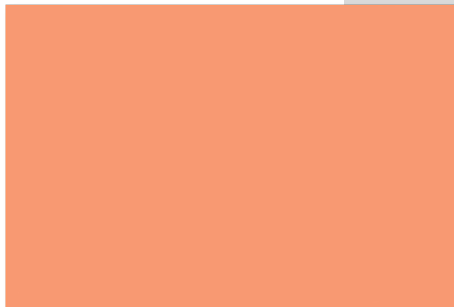


PVC FILMS

The Colour Book shows a selection of liquid colours specifically formulated by REPI for extrusion and calendering of PVC film.
Many effects can be achieved: transparent, opaque, metallic, glossy and matt.
Type of PVC and amount of titanium dioxide used in the transformation process can affect the intensity of the finished colour.



SET-UP YELLOW REMAP
SIMILAR TO PAN 7401U



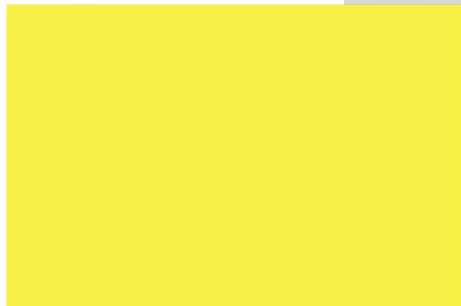
SALMON REMAP
SIMILAR TO PAN 713U



RACE RED REMAP
SIMILAR TO PAN 032U



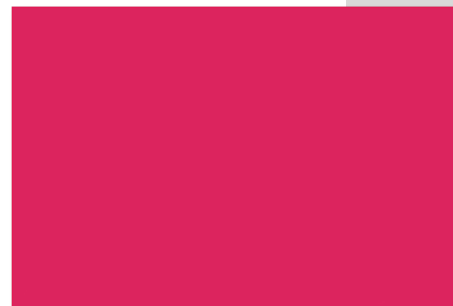
LEAF GREEN REMAP



CITRUS YELLOW
SIMILAR TO PAN 101U



BEAK ORANGE REMAP
SIMILAR TO PAN 136U



BUBBLE RED REMAP
SIMILAR TO PAN 213U

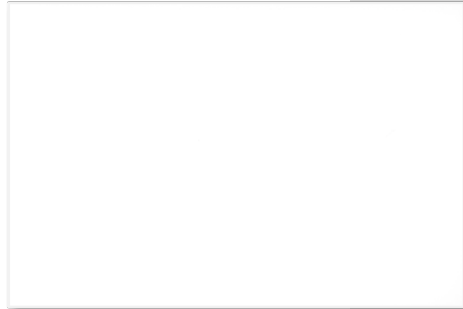


BANK BLUE REMAP
SIMILAR TO PAN 298U

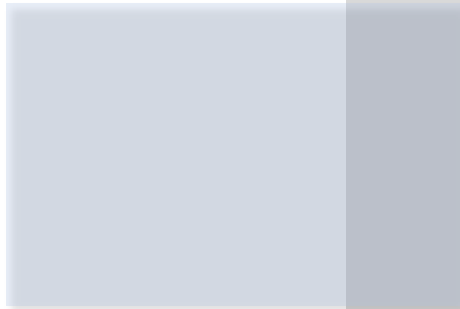
Online colour calibration - Due to individual computer monitor limitations, on-screen colours may not accurately reflect real colour shade -
Before placing any orders, please check with REPI experts.
Copyright REPI - All rights reserved.

PVC FILMS

The Colour Book shows a selection of liquid colours specifically formulated by REPI for extrusion and calendering of PVC film.
Many effects can be achieved: transparent, opaque, metallic, glossy and matt.
Type of PVC and amount of titanium dioxide used in the transformation process can affect the intensity of the finished colour.



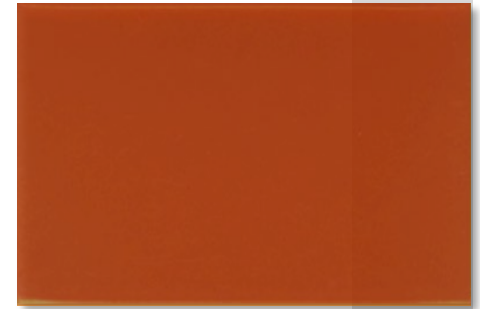
TABLET WHITE REMAP



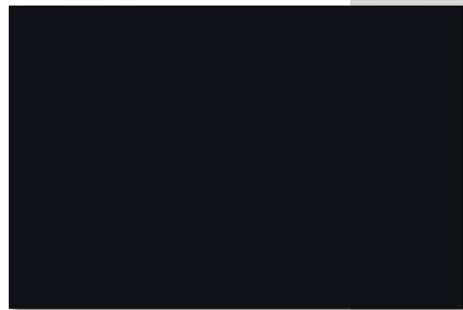
TONER TR REMAP



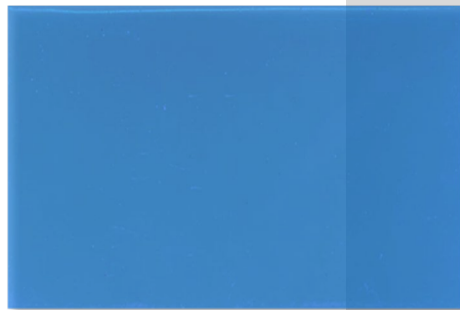
SWEET ORANGE TR REMAP



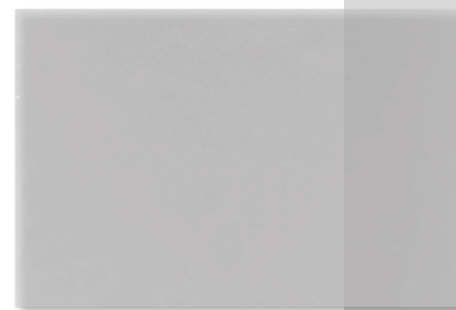
BRONZE TR REMAP



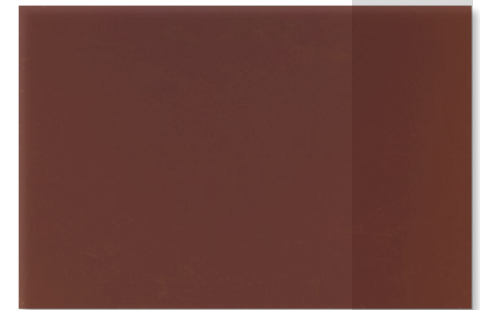
NIGHT BLACK REMAP



SKY BLUE TR REMAP



SILVER TR REMAP



CHOCOLATE TR REMAP

Online colour calibration – Due to individual computer monitor limitations, on-screen colours may not accurately reflect real colour shade –
Before placing any orders, please check with REPI experts.
Copyright REPI – All rights reserved.





WE ARE #COLOUREXPLORES
repi.com



REPI GROUP – FERLINE SA
Via Lucchini 2
CH-6900 Lugano - SWITZERLAND
ferline@repi.com

REPI S.r.l.
Via B. Franklin 2
21050 Lonate Ceppino VA - ITALY
repi.italia@repi.com

REPI LLC
2825 REPI Court
Dallas, NC 28034 - USA
repi.usa@repi.com

OOO "REPI"
St. Aleksey Dikogo 18B,
office 307
111396 Moscow - RUSSIA
repi.russia@repi.com

REPI (UK) LIMITED
36 Dunes Way,
Wellington Employment Park
Liverpool L5 9RJ - UK
repi.uk@repi.com

REPI THAI CO, LTD
347/50-51 Moo9,
Nai Khlong Bang Pla Kod Sub-District
Phra Samut Chedi District,
Samut Prakan Province, 10290
THAILAND
repi.thailand@repi.com